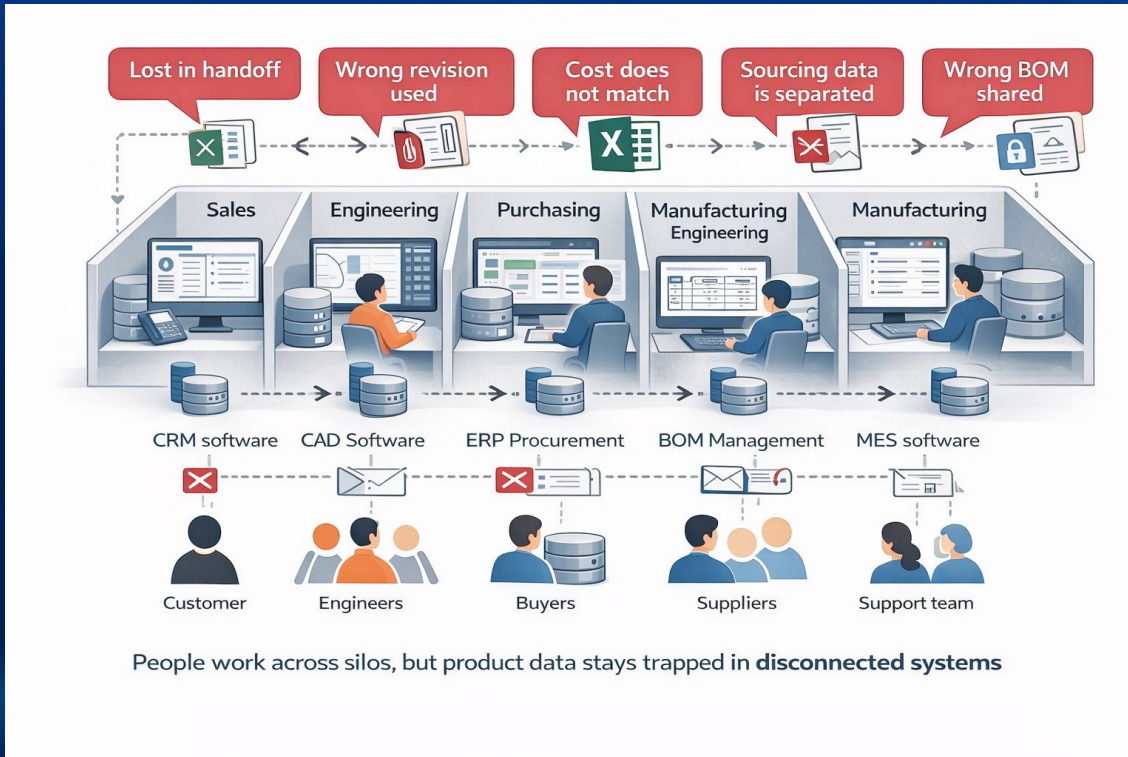


CAD File Agent for SOLIDWORKS

The first step toward the OpenBOM Product Memory Platform

Oleg Shilovitsky, CEO and Co-founder

Engineering and manufacturing data is fragmented by nature



Every handoff is a gap

Companies work across teams, suppliers, tools, and handoffs – and each transition is a place where knowledge gets lost.

Spreadsheets and email are not failures

Excel, email, and local files are not failures of discipline. They are the natural result of how product work actually flows.

No system sees the full picture

Even well-managed companies operate across multiple systems – and no single system has a complete view of the product.

Fragmentation is not a technology problem. It is a structural condition of how products are built.

One platform is the promise. What companies actually run on ...



- Multiple CAD tools and PDM vaults
- PLM platforms
- Spreadsheets and email for BOM handoffs
- Shared drives and local desktop files
- Supplier portals and contract manufacturer packages
- ERP systems with their own data structures
- Manual coordination filling the gaps between all of them

The platform vision was is not wrong. Real company workflows are simply broader and messier than any single platform can absorb.

Structured Data is Only A Visible Part of the Product Data Iceberg

What systems capture:

- Part numbers & BOM structures
- Released drawings and CAD files
- Approved vendor lists
- Change orders and ECOs



What gets lost:

- Why a component was chosen
- Trade offs in design review
- Which supplier was rejected
- How a change was justified
- What a customer issue revealed
- Reasoning behind every decision

Most product knowledge lives below the waterline. It disappears when things change and when people leave.

Introducing OpenBOM Product Memory Platform Vision

01 CAPTURE

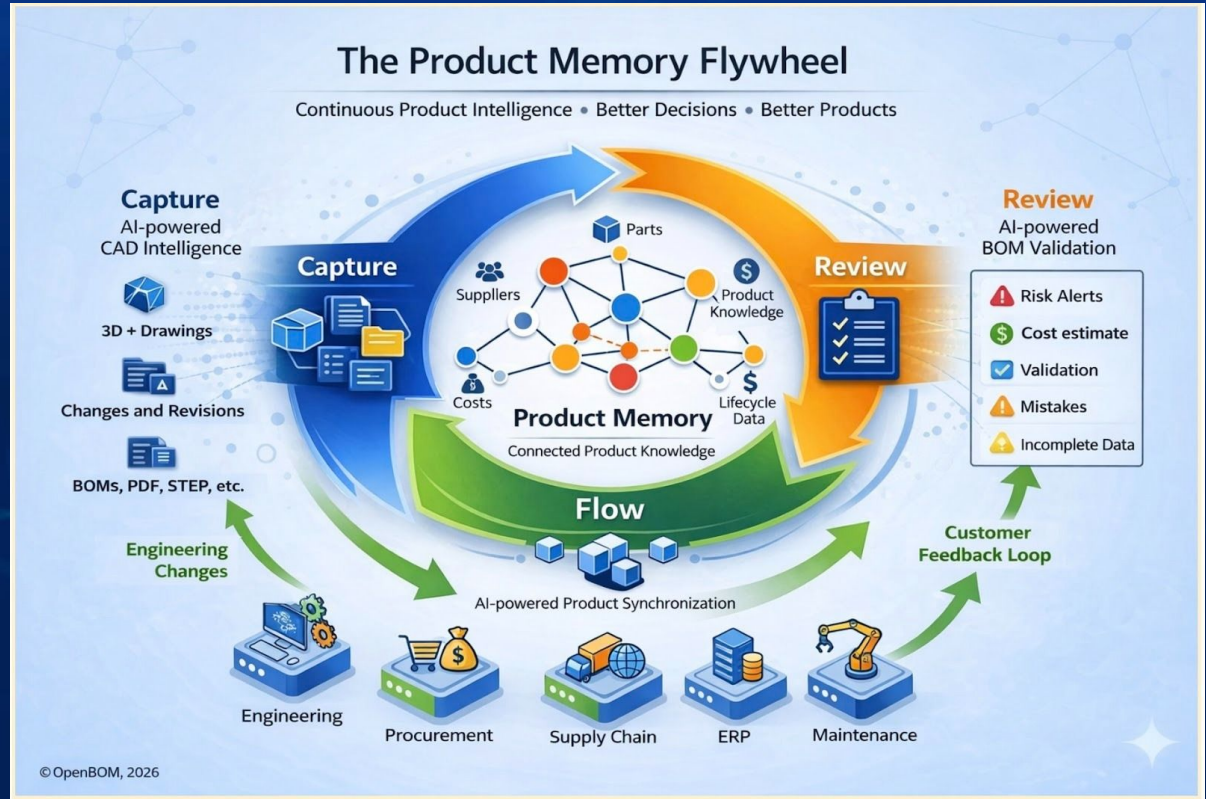
Bring product knowledge into a connected structure from CAD, files, and engineering work

02 REVIEW

Validate, compare, and understand what changed, why it changed, and what it means downstream

03 FLOW

Move structured, contextual product knowledge across teams, suppliers, ERP, and lifecycle stages



The goal is not to replace your systems. It is to connect the knowledge that currently lives between them.

We built the data foundation. Now building the intelligence layer on top of it.

1

Connected Workspace

A multi-tenant collaborative environment with flexible data modeling, where engineering, procurement, and operations teams work from the same product data - "Google spreadsheet" on PLM steroids

2

CAD and Engineering Data Integration

Native connections to CAD tools, PDM systems, and engineering file sources – so product data enters the system from where engineers actually work, not from manual re-entry.

3

Inventory Management and Procurement Handoff

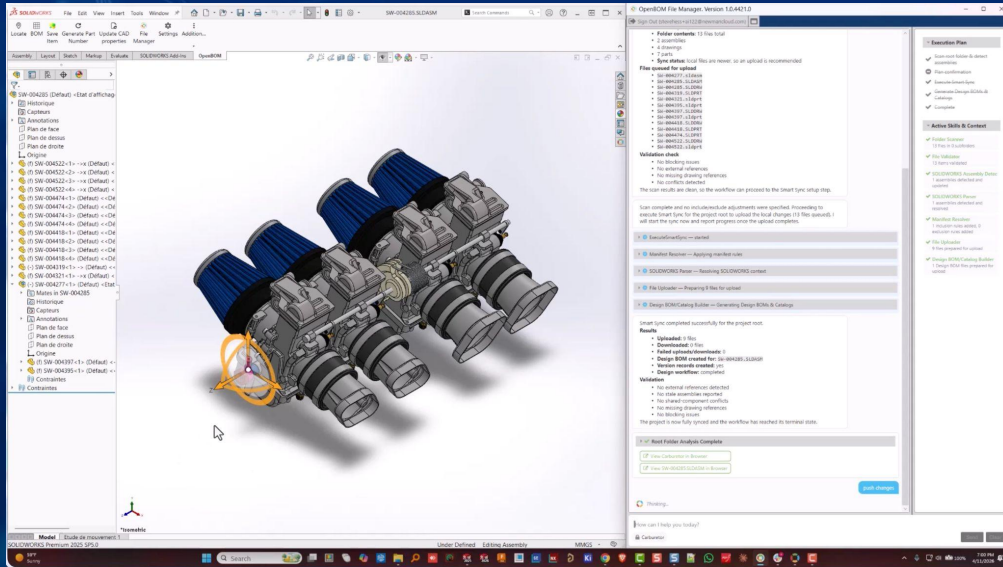
Structured pathways from engineering BOM to procurement, inventory, ERP, and financial packages – managing that data directly or connecting to systems companies already run.



This is not a vision. For the last five years we gathered production use across engineering and manufacturing teams.

TODAY WE ANNOUNCE

CAD File Agent for SOLIDWORKS



CAD file capture with references & dependencies

Structured design organization

Multi-user coordination and access control

Complete change history, revisions, & comments

One-click restoration to any prior project revision

Agentic workflows & conversational product context

Connect product knowledge

CAD File Agent is the Capture stage of the Product Memory Platform – where engineering knowledge begins its journey into a connected system.

This is the beginning of the roadmap, not the end of it

AVAILABLE NOW

CAD File Agent for SOLIDWORKS

Early access for selected customers

Contact us to get started

COMING NEXT

Review Agents

BOM review & validation

Engineering change impact analysis

Missing data identification

COMING AFTER

Flow Agents

ERP Sync

Supplier coordination

PDM/PLM Sync

CAD Agents for other CAD

The product organization that builds a Product Memory layer today will compound that advantage every year.

The knowledge you capture now is the institutional memory your AI systems will run on tomorrow.

Thank you!



Oleg Shilovitsky
CEO, co-founder
oleg@openbom.com



Let's connect